

## Precautions:

For external use only • Do not use for purposes other than intended • Do not share your **OPTASE® Cooling Mask** • Do not apply to sensitive skin or open wounds • Do not ingest contents • Seek medical advice if symptoms persist or worsen • Inspect your **OPTASE® Cooling Mask** and discard it if damaged • Keep out of reach of children • The head straps in this product contain latex • Store at room temperature.



Visit [www.optase.com](http://www.optase.com) to see our other dry eye and blepharitis products.



# SCOPE

Manufactured for Scope Health Inc  
WW 79 Madison Av, 27 E 28th St. New York, NY 10016

Questions: +1 917 7954227

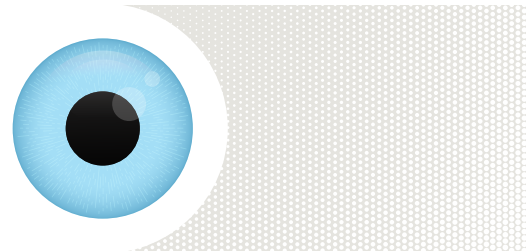
[www.optase.com](http://www.optase.com)

[hello@optase.com](mailto:hello@optase.com)

HydroCool™ is a trademark  
of Scope Ophthalmics Ltd.

# OPTASE®

## COOLING MASK



Featuring **HydroCool™** Technology

Reusable cooling mask to relieve Dry Eye symptoms such as itchy, red, watery eyes as well as puffy or inflamed eyes and eyelids.



# SCOPE

# OPTASE®

## COOLING MASK

The **OPTASE® Cooling Mask** is a reusable cooling mask designed to relieve Dry Eye symptoms, such as itchy, red, watery eyes as well as puffy or inflamed eyes and eyelids.



## Directions for use:

1



Place the **OPTASE® Cooling Mask** in a sealed plastic bag and place in the freezer for one hour.

2



Position the **OPTASE® Cooling Mask** around the head and close eyes for 10 minutes adjusting the strap for comfort.

Do not wear the **OPTASE® Cooling Mask** for longer than 20 minutes.

The **OPTASE® Cooling Mask** features HydroCool™ Technology to provide cooling therapy to the closed eyelids.

## Recommended use:

Cold therapies can reduce and relieve Dry Eye symptoms, such as itchy, red, watery eyes as well as puffy or inflamed eyes and eyelids.

## Useful information:

Contact lens wearers must remove lenses prior to using the **OPTASE® Cooling Mask**.

After treatment, it may be normal to experience some blurring in your vision. The blurriness should clear within a few minutes. If it does not clear within an hour, consult your eye care specialist.

Wash immediately if exposed to foods, oils, grease or other dirt. Hand wash in cooled boiled water or bottled water with a mild detergent. Air dry for a minimum of 24 hours until it is completely dry before next use.